



SCREENING BUCKETS

**HIGH-QUALITY SCREENING
BUCKETS FOR VERSATILE MATERIAL
SCREENING**

**Viper Screening Buckets are designed to
handle tough tasks, providing reliable
solutions for professional use.**

VIPER SCREENING SERIES



OVERALL FEATURES

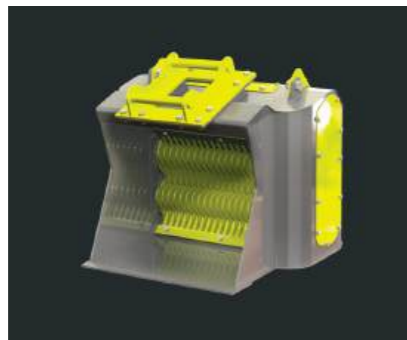
- LIGHTWEIGHT STRUCTURE
- EASY AND QUICK TO USE
- TOP-NOTCH DURABILITY
- WIDE PRODUCT RANGE
- VERSATILE BLADE ASSORTMENT
- FOR EXCAVATORS AND WHEEL LOADERS
- COST-EFFECTIVE USE
- EASY TO MAINTENANCE
- COMPREHENSIVE WARRANTY
- CUSTOMIZABLE FOR SPECIAL ORDERS

IDEAL FOR:

**Screening soil, peat, and various aggregates, as well
as light crushing, our screening buckets deliver top
performance in a wide range of applications.**

SCREENING BUCKET MODELS

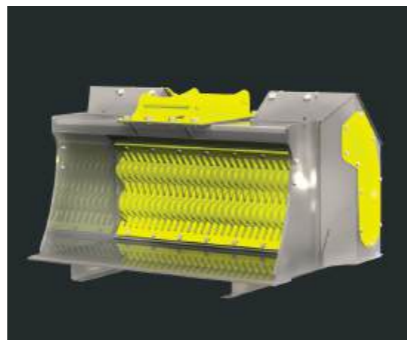
**VIPER SCREENING BUCKET RANGE
OFFERS MODELS FOR ANY MACHINE
AND APPLICATION.**



VPH 2-700

Excavators:
3,500 — 7,000 kg

Wheel loaders:
2,000 — 3,000 kg



VPH 2-1500

Excavators:
8,000 — 10,000 kg

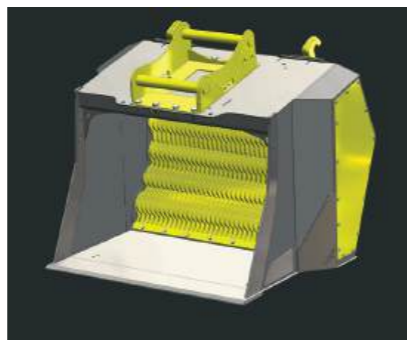
Wheel loaders:
4,000 — 7,000 kg



VPH 3-1500

Excavators:
10,000 — 15,000 kg

Wheel loaders:
7,000 — 10,000 kg



VPH 4-1502

Excavators:
14,000 — 23,000 kg

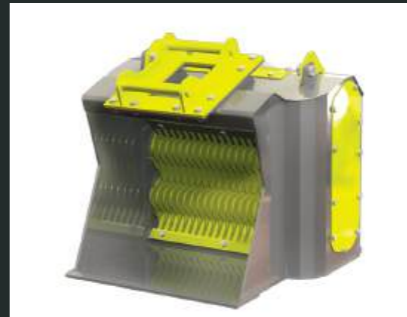
Wheel loaders:
9,000 — 15,000 kg



VPH 3-1700

Excavators:
22,000 — 30,000 kg

Wheel loaders:
12,000 — 16,000 kg



VPH 4-1700

Excavators:
24,000 — 35,000 kg

Wheel loaders:
14,000 — 20,000 kg



VPH 3-2300

Excavators:
28,000 — 35,000 kg

Wheel loaders:
18,000 — 25,000 kg



VPH 4-2300

Excavators:
32,000 — 45,000 kg

Wheel loaders:
21,000 — 30,000 kg



VPV 4-1100

Excavators:
14,000 — 22,000 kg

Wheel loaders:
—



VPV 5-1350

Excavators:
20,000 — 28,000 kg

Wheel loaders:
12,000 — 16,000 kg

VPH/VPV CUSTOM

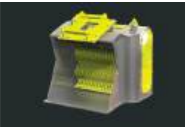











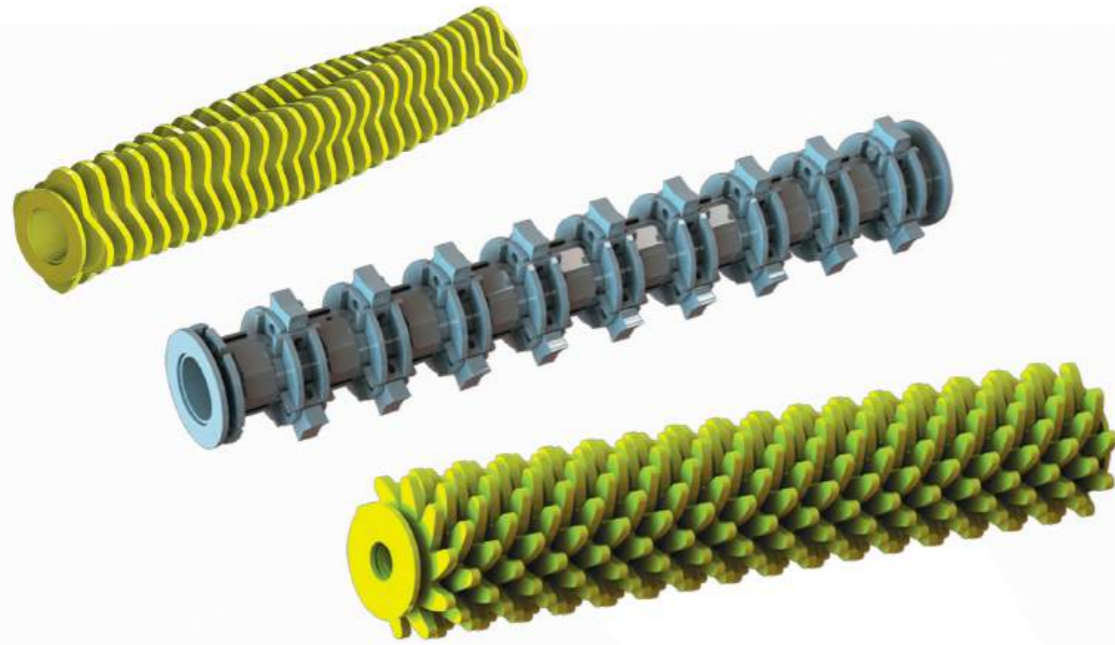
Customized screening bucket models

Viper screening buckets can also be fully customized according to the specific features desired by the customer.



SCREENING BUCKET SPECIFICATIONS

	Model	Min-Max l/min	Oil Pressure (bar)	ISO/SAE m ³	Screen area m ²	Weight (kg)	Size H*W*D (mm)
	VPH 2-700	40-70	180	0,15/0,19	0,3	280	760*910*800
	VPH 2-1500	40-100	210	0,6/0,7	0,6	690	850*1620*1050
	VPH 3-1500	70-220	210-250	0,7/0,8	1	980	1000*1720*1200
	VPH 4-1502	120-220	210-250	1,3/1,43	1,3	1400	1300*1720*1550
	VPH 3-1700	180-360	210-250	2/2,2	1,4	2100	1450*2050*1650
	VPH 4-1700	200-360	210-250	2,7/3	1,6	2750	1700*2050*1950
	VPH 3-2300	180-360	210-250	3/3,4	2	2750	1450*2650*1650
	VPH 4-2300	200-360	210-250	3,9/4,5	2,4	3250	1700*2650*1950
	VPV 4-1100	120-250	210-250	1/1,2	0,9	1400	1450*1300*1350
	VPV 5-1350	120-250	210-250	1,3/1,5	1,2	1700	1500*1550*1450



SCREENING BUCKET BLADE SERIES

**WE OFFER VERSATILE BLADE OPTIONS
PERFECTLY SUITED FOR SCREENING,
LIGHT CRUSHING, MIXING,
BIO-AERATION, AND STABILIZATION.**

Each blade model is available in different spacings, influencing the particle size of the screened material, ensuring an optimal outcome



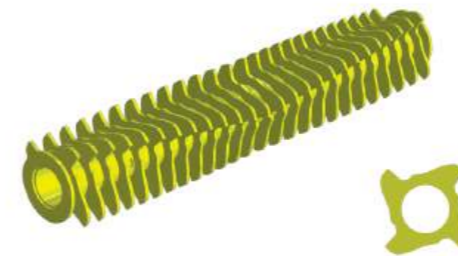
STANDARD SERIES

Blade design for screening



25C

Screening and light crushing



45C

Blade design for screening and light crushing



BIGBLOCK (WELDED)

For stabilization and mixing



BOLTBLOCK (BOLTED)

For crushing medium-hard materials



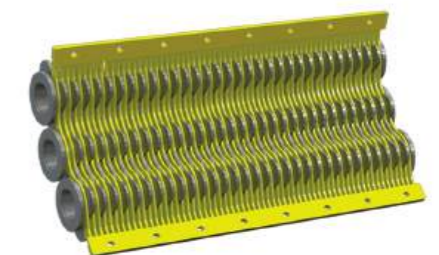
PU RUBBER

For screening soft materials



CRUSHMIX

For crushing and refining



FINE SCREEN GRID

System for screening and light crushing



ACCESSORIES FOR SCREENING BUCKET

**THERE'S A RANGE OF ACCESSORIES
AND SUPPLIES AVAILABLE FOR
VIPER SCREENING BUCKETS**

These add-ons offer significant flexibility and adaptability in handling various materials while adding reliability and safety to operations

EXTENSION KIT

Screening efficiency-boosting and waste-reducing extension edges

MOUNTING OPTIONS

Mounting options of screening buckets to excavators and loaders.

BOTTOM WEAR PLATES

Durability against wear for heavy use and extreme conditions.

LEAK/TANK LINE COMPENSATOR

For applications where tank line connection is not available

WELD-ON ADDITIONAL LIP PLATE

Durability against wear for screening